



# 

No. 60 • March 15, 2017

Hello from the Uni Hi Education Foundation, the official alumni support organization for University High School. Your comments and contributions make this report better, so send us a note at [Connect@UHEF.org](mailto:Connect@UHEF.org).

The **Warriors & Wildcats Report** is free for anyone who signs up: [click here](#) to go to the subscription page, fill in your name and e-mail address and you'll receive the WWR in your e-mail inbox! T-E-L-L your friends!

## 

Mar. 18	<a href="#"><u>Class of 1977 40-year Reunion</u></a>	Los Angeles Marriott/Burbank
Mar. 19	<a href="#"><u>Campus Clean-up Day I</u></a>	Campus
Apr. 10-14	<a href="#"><u>Spring Recess</u></a>	Campus
Apr. 19-22	<a href="#"><u>"Shrek the Musical"</u></a>	Stivelman Theater
Apr. 23	<a href="#"><u>Campus Clean-up Day II</u></a>	Campus
Apr. 28	<a href="#"><u>1st University High Student Film Festival</u></a>	Stivelman Theater
Apr. 29	<a href="#"><u>UHEF Takes You to the Movies: "Grease"</u></a>	Stivelman Theater
Jun. 09	<a href="#"><u>Spring semester ends</u></a>	Campus

## 

▣ **David Nwaba** '11 became the first-ever Uni alum to play in the National Basketball Association, earning a 10-day Lakers contract after a strong season with the L.A. Defenders of the NBA Development League. And his play has earned him a second 10-day contract on March 11, essentially extending his tryout with the team for another five games.

He impressed the coaching staff with his defense, hustle and work ethic. Said Lakers coach **Luke Walton**, "He's been great. ... We talked about it as a staff. ... He's done everything he can to deserve another 10 days."

For Nwaba, who was an all-Conference selection at Cal Poly San Luis Obispo after finishing at Uni, making it to the NBA was a dream come true. “Growing up every year, during my birthday [January 14], it was always my wish to play in the NBA,” he told the [Los Angeles Times](#). “I’m glad it all worked out.

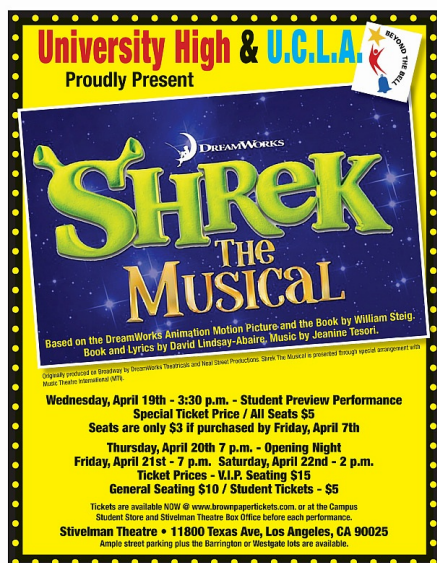
“I’m just trying to make use of this opportunity right now. Give it 100 percent effort. Every day I am here and hopefully everything works out and I get another 10-day contract.”

He did. For the record, here’s a summary of his [statistics](#) during his first 10 days as a Laker:

• Feb. 28	vs. Charlotte	5 mins.	0-1 field goals	0-0 free throws	1 rebound	0 pts.
• Mar. 03	vs. Boston	20	2-2	3-4	2	7
• Mar. 05	vs. New Orleans	9	0-0	0-0	1	0
• Mar. 07	at Dallas	8	1-3	0-2	1	2
• Mar. 09	at Phoenix	14	1-3	2-2	3	4

Nwaba is, of course, part of the first family of Uni athletes. His older sister **Barbara** is the U.S. Heptathlon champion and competed in the Rio Games last summer, and younger brother **Victor** plays NCAA Division II basketball for Academy of Art College in San Francisco.

## UNI PRODUCTION OF “SHREK THE MUSICAL” COMING APRIL 19



- Uni’s spring production brings “Shrek The Musical” to the Stivelman Theater for four performances only, beginning April 19th, 2017.

The show is based on the 2001 Oscar-winning DreamWorks Animation film and the book *Shrek* by William Steig. It follows the adventures of an ogre named Shrek who sets off on a quest to save Princess Fiona from a dragon. However, in order to succeed, Shrek must learn how to believe in himself and open his heart to others.

The original theatrical production ran for twelve months on Broadway and received twelve Drama Desk Awards and eight Tony Award nominations, including Best Musical.

Uni's production is the latest hit from Uni Director of Theater Arts **Ronnie Sperling** '76 and will run for four days next month:

[1]	April 19:	Wednesday	3:30 p.m. ~ Student Preview Performance
[2]	April 20:	Thursday	7:00 p.m. ~ Opening Night
[3]	April 21:	Friday	7:00 p.m. ~ Friday Night Showcase
[4]	April 22:	Saturday	2:00 p.m. ~ Closing Matinee

Tickets for the April 19 show are priced at \$5, with an early-purchase price of just \$3 through April 6. Tickets for the April 20-21-22 shows are available at \$10 each, with VIP/First Row seats priced at \$15 each.

Tickets may be purchased online [here](#), or at the Uni Student Store anytime prior to the show date or at the Stivelman Theater box office on the day of each show. The Stivelman Theater entrance is on Texas Avenue, mid-block between Westgate and Barrington Avenues. Ample street parking is available, with school lots on Barrington Avenue and Westgate Avenue both available as well.

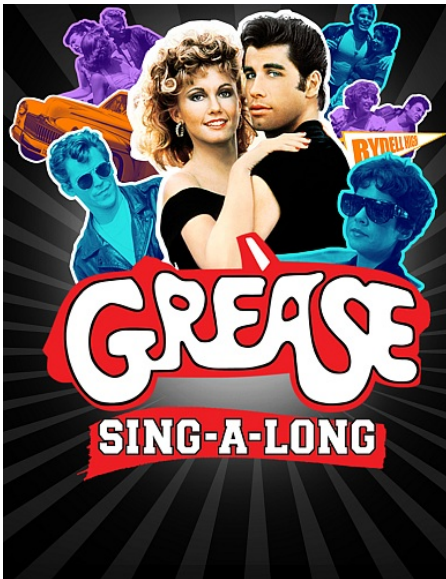
“Shrek The Musical” is presented through special arrangement with Music Theatre International (MTI). The Uni Theater Arts program is supported by UCLA's Beyond the Bell and the Uni Hi Education Foundation. For more on Uni's theatre arts program, check out its Facebook page at:

<https://www.facebook.com/unihightheater/>

---

## **SING ALONG WITH “GREASE” AT THE UNI FILM FESTIVAL ON APRIL 28-29**

---



- ▣ Did you have more fun at Uni than Danny and Sandy had at Rydell High in “[Grease](#)”?

Then get your gang together and find your bobby sox for a night back to the 1950s when the UHEF presents the sing-along version of the 1978 smash movie at the Stivelman Theater on Saturday night, April 29 at 7 p.m.!

The Grease Sing-A-Long version, starring Olivia Newton-John and John Travolta has been digitally remastered in this special version, made for audience participation.

If you're “Hopelessly Devoted” to Grease, you'll be able to sing along to “You're the One That I Want,” “Beauty School Dropout,” “Summer Nights” and all of the film's big hits as you experience the friendships, romances and adventures of a group of high school kids in 1950s Los Angeles.

This event features the hit movie complete with song lyrics printed on the screen! You can come as you are, or dress up as characters from the movie, but come ready to clap and sing along to one of the fun movies of all time.

This is a fund-raiser for the Uni Hi Education Foundation. Tickets, which will include snacks as well, are expected to be \$20 for adults and \$10 for students with student identification. You will be able to buy tickets online [in the next few days](#) at:

[www.UHEF-presents-Grease.BrownPaperTickets.com](http://www.UHEF-presents-Grease.BrownPaperTickets.com)

The film will be shown using a special projector to span a cyclorama screen across the entire theater stage, so you'll essentially be right in the middle of the quad at Rydell High for the entire show!

The first-ever **UNIVERSITY HIGH SCHOOL STUDENT FILM FESTIVAL** will take place on Friday (28), beginning at 4 p.m., showcasing student films from Uni and other high schools. If you'd like to help with the organization and promotion of the festival, don't be shy and let us know right away by e-mail at [Connect@UHEF.org](mailto:Connect@UHEF.org).

### **UNI LIBRARY DONATIONS PASS 120; HOW ABOUT YOU?**

---

- ▣ Contributions of new books continue to pour into the Uni library, with 121 books donated by alumni and friends since the program began last October.

The latest contributions came from **Doreen De Leon**, who purchased [\*The Wolves at the Door\*](#), the story of American spy Virginia Hall, who frustrated and Nazis in France during World War II, and [\*Women Heroes of World War II\*](#), with 26 stories of those who helped the Allies defeat the greatest criminal regimes in history.

De Leon joins the library's honor roll of Uni alumni and friends contributing books:

**Jeff Deckman** '76

**Ivan Finkle** '50

**Barbara Wong Franklin** '68

**Judy Kleinberg** '65

**Ruth Albert Roberts** '64

**Robert Schrag** '83

**Judy Wolfenstein**

**Kevin Young** '75

Uni librarian **Tascha Folsoi** '86 – also a book donor – devised a simple process to help modernize the school library by using Amazon.com's "Wish List" function. Anyone can go to the list ([here](#)), purchase one or more books – most of the donors so far bought multiple books – and they will be sent to Uni directly within two business days.

The "University Senior High Library" Wish List enjoys Amazon Prime status thanks to Folsoi, so that you (as the purchaser) **do not** have to be an Amazon Prime member to buy any of the books!

Folsoi asks for help if you buy a book: *"I think it would be better if we also asked people to email me their name and grad year along with items purchased, so I can email them back with the tax I.D. number and also remove the items from the list."* You can contact her at [tascha.folsoi@gmail.com](mailto:tascha.folsoi@gmail.com). Yes, your book purchase is a charitable donation!

All purchasers of books for the library are permanently recognized with a donor plate on the inside front cover of each donated book. Ready to help? Here's the link to the Wish List:

[https://www.amazon.com/gp/registry/wishlist/2907HPM85SFOW/ref=cm\\_sw\\_su\\_w](https://www.amazon.com/gp/registry/wishlist/2907HPM85SFOW/ref=cm_sw_su_w)



## TIME STANDS STILL: 77 CHIEFTAINS NOW ONLINE AT UHEF.ORG

- ▣ The permanent memorial to each Uni class is the annual *Chieftain* yearbook, produced continuously (with a two-year hiatus during World War II) since 1924. Some 77 of these, from 1924 through 2005 are now available online and viewable, free of charge, at [www.uhef.org/unihighyearbooks](http://www.uhef.org/unihighyearbooks).

Underwritten by the UHEF and funded by your donations, this project was coordinated with Uni's librarian, **Tascha Folsoi** '86. Work is continuing on a few missing years, but the collection is nearly complete:

- 1924-29: Missing 1928, but a copy has been offered by **Donald Grandfield** '59, which will be scanned and added as soon as possible.
- 1930-39: Missing 1934, for which a copy has been found and is now being scanned.
- 1940-49: Complete, although yearbooks were not produced for 1943 and 1944 due to paper rationing during World War II. A special scrapbook of Uni faculty and staff who served in the military is included as a special memory of that time.
- 1950-59: Complete!
- 1960-69: Complete!
- 1970-79: Complete!
- 1980-89: Complete!
- 1990-99: Complete!
- 2000s: Missing 2000 (we're not sure why), but 2001-05 are now available.

Special thanks are offered to three alumni who made donations to have their years posted more quickly and to help support the project: **Buddy Fischer** '50, **Larry Tistaert** '59 and **Steve Sills** '65.

Special recognition is available on the UHEF yearbook Web site for those who would like to be "presenters" of their yearbook, for a one-time donation of \$199, which includes two downloads of that Chieftain. **Michael Alcalay** '80 was the first to take advantage of this opportunity; will you join him as presenter of your year?

If you would like to be the Class Presenter for any of the yearbooks, please [click here](#) and in the space for "How are you affiliated with Uni?," please write "Class Presenter 19xx" for the year which you want to support. Class Presenters receive two complimentary downloads of their year and Presenter status on the class page.

When you visit the UHEF.org [Yearbooks page](#), you can click on any of the covers and browse any of the books now online. If you click the "Purchase" button below each cover, you'll be taken to another page with options for:

- (1) Buying a download (PDF) of that yearbook, for \$99, or
- (2) Buying a download (PDF) of that yearbook and adding a Dedication that will be shown on that page indefinitely, for \$149, or
- (3) Buying a download (PDF) of that yearbook and becoming a Presenter of that class yearbook (if available), shown on the top of the page indefinitely, for \$199.

The downloaded editions of each Chieftain are suitable for use on a computer, tablet or large-screen smartphone. If you would like a higher-resolution copy suitable for print-out, let us know and we will make arrangements to send a larger version (50-100 MB in size!) that has better detail when printed.

Payments are taken by credit card through PayPal, but you don't have to have a PayPal account to use it. Questions? Send your inquiries to [Connect@UHEF.org](mailto:Connect@UHEF.org) and we'll get back to you ASAP!

## **A UNI MEMORY THAT FITS IN YOUR WALLET: THE "WARRIORS & WILDCATS ACTIVITY CARD"!**



- ▣ When you attended Uni, you probably bought a "Warrior Activity Card" (now the "Wildcat Activity Card") to get free admission to Uni athletic and performing arts events. Now you can have your own, or give one as a gift!

The UHEF "WARRIORS & WILDCATS ACTIVITY CARD" is available for all donations of \$99 and above. All donors of that amount or more will receive a WWAC card, which will allow *free admission* to all Uni home athletic contests (regular-season only) and performing arts events.

So if you'd like to take in the upcoming "*Shrek the Musical*" show in April, forget about tickets. Just show your **WARRIORS & WILDCATS ACTIVITY CARD** and walk right in!

From a tax standpoint, the purchase of a WWAC is tax-deductible as a charitable contribution to the extent that it is not used for admissions to events. Please consult your tax advisor for further details. If you're ready to get one, go to the "[Donate Now](#)" page and make your contribution of \$99 or more. We'll get your card out right away!

## **ON CAMPUS**

- ▣ Uni sports report:

*Follow the Wildcats on Twitter: [@Utownsports](#)*

- Boys/Baseball:

Uni's baseball team is an unfortunate casualty of the major renovations that have created the outstanding football/soccer/track & field facility in Kampmann Stadium. Because of the AstroTurf field that have no cutouts for bases and inability to place dugouts on the field, Uni has to play all of its games on the road.

Thus far in 2017, **Craig Turkel's** squad is 3-5-1, with wins over Crossroads and

Leuzinger and a 9-6 win over Fairfax to open Western League play. MaxPreps schedule and statistics are [here](#).

- Boys/Tennis:

The Wildcats are 2-5 overall and 2-3 in the Western League, with wins over Venice and LACES. For scores and schedule, click [here](#).

- Boys/Volleyball:

**Emilio Alvarado's** team is off to another strong start in 2017, with a 8-4 record so far, and a straight-set win over Westchester to open Western League play. Scores and schedule are [here](#).

- Girls/Softball:

Uni is starting its second season with **Jason Tillet** as coach and is 1-2 thus far, with a 14-4 win over West Adams. Western League play started vs. Fairfax on March 14, which is played on what is now known as the "Upper Field," but was referred to in Warrior times as the "Girl's Field." For scores and schedules, click [here](#).

- Track & Field:

Coach **Kelly Aguda** has nearly all of Uni's meets at home, given the quality of the nearly-new Patton Track inside Kampmann Stadium. After the opening meet against the L.A. Center for Enriched Studies (LACES), which had special ceremonies to honor the late, great Dick Kampmann, the remainder of the schedule includes:

Mar. 16	Santee & San Pedro	@ San Pedro High School
Mar. 23	Western League Relays	Kampmann Stadium
Mar. 29	Fairfax & Palisades	Kampmann Stadium
Apr. 06	Westchester	Kampmann Stadium
Apr. 20	Hamilton	Kampmann Stadium
Apr. 27	Venice	Kampmann Stadium

Best of all: admission to Uni track & field meets is free! See you there!

Unfortunately, dual-meet and league team scores are never reported, so we can't bring them to you. You can follow Uni's individual athlete results on Athletic.net [here](#).

## REUNIONS

- ▣ We're asked constantly about whether reunions of specific classes are happening. If they aren't listed below, we don't know about them, but are happy to list the information as soon as supplied to us.

**Formal reunions and informal get-togethers get organized because *one person decides it should happen and finds other classmates who feel the same way. Just decide that you're going to make it happen . . .***

▣ Upcoming reunions that we know about include:

- Mar. 18, 2017: **CLASS OF 1977: 40-YEAR REUNION**  
At the Los Angeles Marriott – Burbank Airport, Burbank  
Information: **Gabe Vega** ([alohihoku40@gabrielvega.com](mailto:alohihoku40@gabrielvega.com)) and/or visit <https://www.facebook.com/groups/UniHigh77/>  
Reservations and tickets: Click [here](#).
- Sep. 23, 2017: **CLASS OF 1954 (Capris) 63-YEAR REUNION**  
At the Saticoy Golf Course Clubhouse, Ventura  
Information: **Erin Boomer** ([boomererin@gmail.com](mailto:boomererin@gmail.com))
- Oct. 07, 2017: **CLASS OF 1967: 50-YEAR REUNION**  
Hollywood & Highland Center, Los Angeles  
Information: **Judi Astrachan Doling** ([judidoling@sbcglobal.net](mailto:judidoling@sbcglobal.net))  
Reservations and tickets: Please contact The Reunion Committee at (661) 259-5999 or visit [www.reunioncommittee.com](http://www.reunioncommittee.com).
- Oct. 13, 2018: **CLASS OF 1968: 50-YEAR REUNION**  
Hollywood & Highland Center, Los Angeles  
Information: **Kathie Brown Marion** ([marionmoses@me.com](mailto:marionmoses@me.com)).  
Reservations and tickets: Please contact The Reunion Committee at (661) 259-5999 or visit [www.reunioncommittee.com](http://www.reunioncommittee.com).

Please send details of any and all reunions, meetings or informal get-togethers to [Connect@UHEF.org](mailto:Connect@UHEF.org) for inclusion in future issues.

▣ ***Class of 1987:***

A reunion committee is forming for a 30-year celebration later in 2017. Check out the class Facebook page at <https://www.facebook.com/groups/129073165787/> or contact **Marvina (Stephens) Miller** at [marvina@centurycommercial.com](mailto:marvina@centurycommercial.com).

▣ ***Classes of 1957-1997-2007, are you holding reunions in 2017?***

The Foundation can provide some help in locating classmates, if we have them as part of our database of 14,000+ addresses (online and postal). If you're out there and want to know more, contact UHEF Co-President **Ivan Finkle** '50 via [Connect@UHEF.org](mailto:Connect@UHEF.org) right away!

*If your class maintains a [Web site](#) or [Facebook page](#),  
please send the address to [Connect@UHEF.org](mailto:Connect@UHEF.org)  
and we'll add it to this list!*

***Class of 1987:***

- On Facebook: <https://www.facebook.com/groups/129073165787/>



Class of 1981:

- On Facebook: <https://www.facebook.com/groups/UNI1981Centurians/>

Class of 1977:

- On Facebook: <https://www.facebook.com/groups/UniHigh77/>

Classes of 1966: Valcisians & Delphians

- On Facebook: <https://www.facebook.com/groups/1092330424115492/>
- For questions, please contact Joyce Rangen at [joyce.rangen@gmail.com](mailto:joyce.rangen@gmail.com)

Classes of 1965: Artesians & Peleans

- <http://uni65.com> or <https://unihi65.wordpress.com>
- To join the Class Facebook page, send an e-mail to [UniHi65@gmail.com](mailto:UniHi65@gmail.com)

Class of Winter 1961: New Yorkers

- <http://www.unihiw61.com>

Class of Summer 1961: Islanders

- <http://www.unihi61.com>

And Uni's theater-arts program is also on Facebook:

- <https://www.facebook.com/unihightheater/>

## UNI HI EDUCATION FOUNDATION NEWS

- ▣ The Uni Hi Education Foundation exists to raise money to support the instructional programming at University High School. A new LAUSD policy allows *on-campus signage* to be available to recognize donations which assist the educational program. Interested for yourself or your company? Sent us a note and we'll help to get the ball rolling: [Connect@UHEF.org](mailto:Connect@UHEF.org).
- ▣ Contribute to Uni by linking your purchases on Amazon.com or at Ralphs to their contribution programs!
  - **Amazon.com:** Your purchases on **Amazon.com** can help Uni! Just go to the UHEF.org "[Donate Now](#)" page, scroll down and **click on the Amazon logo** to go to Amazon.com and your purchase will be credited toward rebates which go to support the school!
  - **Ralphs:** Use your **Ralphs Rewards Card**. Via its Community Contribution program, from 1-4% of monthly purchases made by members is sent to Uni, but by designating the school by linking it to your Rewards Card.

Have your card in hand (you'll need the number on the back), go to the Ralphs [Community Contribution page](#) and either **register** or **sign in** (Questions answered [here](#)); Uni's code for the Ralphs program is **93275**.
- ▣ The Foundation, created by committed Uni administrators, alumni and parents in 1985, has

raised more than \$1 million to support Uni's mission of educational excellence, and to supplement the instructional budget in these lean times. You can donate to the cause by [clicking here!](#)

### **UHEF SCHOLARSHIP UPDATE**

---

- ▣ Did you know that the UHEF – thanks to your donations – supports these annual scholarships for Uni students:
- **Community Service Scholarship:** \$1,000 awarded to a graduating senior who has shown exceptional dedication to community service during their tenure at Uni.
  - **Jack Moskowitz Principal's Award:** Named for one of Uni's most outstanding principals (1984-93), a \$1,000 award to a graduating senior selected by Uni Principal **Eric Davidson** for exceptional achievement and service to the school.
  - **Sharon Mednick Scholarship:** Created in 2004 from a \$10,000 bequest left by Uni counselor Sharon Mednick, this annual \$1,000 scholarship is awarded to a senior interested in a career in education.

In addition, two new scholarships are set to be inaugurated in the coming year with your donations:

- **Coach Richard M. Kampmann Scholarship Fund:** Named for Uni's late, legendary cross country and track & field coach, to be awarded by the Stimming Family in coordination with the UHEF.
- **Violetta Ponce Scholarship:** a new scholarship created by the University High School faculty and staff in memory of the late **Violetta (Ponce) Pacheco**, a Uni English teacher who lost her battle with cancer in May, 2016 at age 40. Contributions to this fund can be made to the UHEF or sent directly to University High School.

To contribute to any of these scholarships, simply go to the [Donate Now](#) section of the UHEF Web site, make your donation and enter the name of the fund you wish to support in the Comments section. Thank you for your generosity.

### **UNI ALUMNI NOTEBOOK**

---

*Reunion information and updates for the  
Classes of 1954-1967-1968-1977-1987:  
Check the [Reunions](#) section above!*

- ▣ The massive plaques saluting Coach **Dick Kampmann**, Uni sprinter (and double Olympic

gold medalist) **Mel Patton** '43 and the school's first principal, **Angus Cavanaugh**, are mounted outside the north side of the South Gym. If you would like to see them, please note that Uni is a closed school and requires visitors to register. Please arrange your entry by calling Uni – (310) 914-3500 – and ask to schedule a date to come to see the plaques.

A handful (literally) of the souvenir DVDs of the May 15th Kampmann-Patton Honors Luncheon remain available. The full speaking program is included, along with personal messages to Coach K and the Patton family and a short highlights [video](#) of the event. The DVDs are \$20 each and can be ordered by going to the [UHEF.org "Donate Now" page](#) and under the "**Comments**" section, please enter "Kampmann-Patton DVD."

▣ We have received a number of inquiries about how one can obtain a copy of an old diploma or a proof of graduation. We have the answers (we think):

- If you graduated within the past 10 years, call the Registrar's Office at Uni directly, and they can help you. Uni's telephone number is (310) 914-3500.
- If you graduated before 2006, here's the link to the LAUSD Web page which includes instructions on how to obtain your records: <http://achieve.lausd.net/transcripts> . Please read the requirements carefully!

---

### SIXTH PERIOD BELL

---

▣ Great question from **Dr. Marshall Segal** S '57 ([marshallbsegal@gmail.com](mailto:marshallbsegal@gmail.com)):

*"If one (me) would like to tour the school (after 60 years), how would one arrange it (not now, but when I am in Los Angeles)?"*

Uni is a closed campus and – unlike old times – visitors must be registered for security reasons. The best way to see today's Uni campus is to call the school – (310) 914-3500 – and ask to schedule a date to come to see the school.

If there is enough interest, perhaps the UHEF could create a couple of tours each semester for alumni to see what Uni looks like today ... and why. Let us know your view by replying [here](#)!

*Contribute your comments, ideas and news to the **Warriors & Wildcats Report**!*

*Send a note to [Connect@UHEF.org](mailto:Connect@UHEF.org) !*

*Be sure to give your full name and Uni graduating class!*

*The **Warriors & Wildcats Report** is published by the Uni Hi Education Foundation, and is edited by Rich Perelman '74. Copyright 2017 by the Uni Hi Education Foundation; all rights reserved, but sharing with classmates, family and friends is encouraged.*

Visit [www.UHEF.org](http://www.UHEF.org) for more information and [www.UHEF.org/wwr/](http://www.UHEF.org/wwr/) to subscribe. For correspondence by mail, please send to the Uni Hi Education Foundation, Post Office Box 491953, Los Angeles, California 90049.

